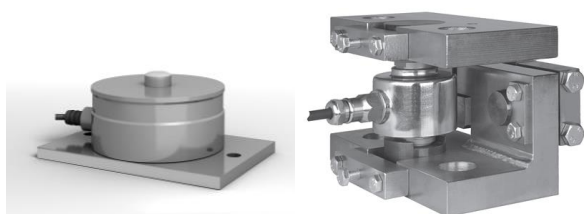


Robust high quality load cells

- Eilersen [load cells](#) tolerate up to 1.000% overload, which allows a very **simple and hygienic** mechanical installation



Eilersen

Competitor

- The simple installation eliminates the need for maintenance and **reduces the total cost of ownership**

- Eilersen load cells are produced in **stainless steel** and hermetically sealed to **IP68** (laser welded) to ensure superb protection



- Eilersen load cells are factory calibrated and compensated to ensure **the highest accuracy (OIML C6)** and **quality** on the market

Patented technology

- Eilersen load cells are based on a patented digital technology, which features true **plug-and-play electrical installation**
- The load cell cable can be **mounted on-site** if necessary and **the length (up to 100 meters)** has **no influence on the calibration** of the load cell
- The digital technology **eliminates the drift and inaccuracy** found in analog electronics as the complete measurement chain is digital



- It is possible to monitor the load and status of each individual load cell in a system which provides **visibility and easy troubleshooting**
- Eilersen load cells are pre-calibrated which **saves time during commissioning**

Flexible solutions

- Eilersen load cells are available in load cell capacities from **1kg up to 500T** and in **OIML (up to C6)** and **ATEX** versions
- Eilersen weighing systems can be supplied with Profibus DP, PROFINET, DeviceNet, EtherNet/IP, Modbus, RS485, RS232, 4-20mA or 0-10V interface
- Requests for **customized** load cells, [instrumentation](#) and application software are welcomed



Eilersen Electric Digital Systems A/S
Kokkedal Industripark 4
DK-2980 Kokkedal
info@eilersen.com
www.eilersen.com
Tel +45 49 180 100
Fax +45 49 180 200

