

2000 Generation Load Cells

Beam Loam Cell SDC



Special Features

- Short version of SD load cell
- Made in Denmark
- Stainless steel
- Robust capacitive technology
- Patented high reliability capacitive sensor
- High tolerance of up to 1.000% overload
- Hermetically sealed to IP68
- Laser welded
- High accuracy, High resolution
- Small deflection at rated capacity
- Capacity (E_{max}): 1, 2, 5, 10, 20, 30, 50, 100kg
- Accuracy: Industrial 0.10%, Precision 0.05%, High Precision 0.025%
- High resonance frequency (spring rate) for rapid dynamic weighing
- Digital filters
- Cable length up to 100meters
- Calibration independent of cable length
- Load cell cable replaceable
- Easy mechanical and electrical installation
- Withstands welding voltages and ESD

Applications

Applications

- Web tension measurement
- Force measurement
- Dynamic weighing
- Process weighing
- Small tanks and vessels
- Vibration sorters
- Filling and dosing

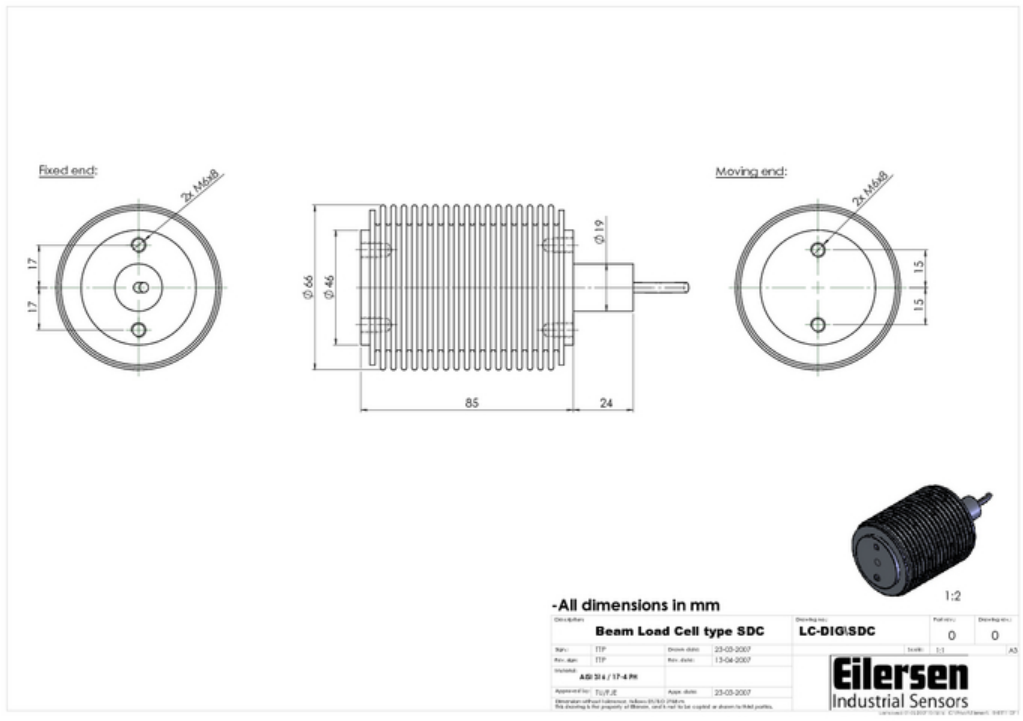


Specifications

Parameter	Unit	0.10%	0.05%	0.025%**
Rated capacity (E _{max})	kg	1, 2, 5, 10, 20, 50, 100		
Safe overload limit	% of E _{max}	200 to 1000		
Safe sideload limit	% of E _{max}	300 to 1000		
Combined Accuracy	% of E _{max}	0.100	0.050	0.020
Repeatability	% of E _{max}	0.018	0.015	0.010
Hysteresis	% of E _{max}	0.033	0.020	0.017
Creep 30 min.	% of E _{max}	0.035	0.025	0.017
Temperature effect on zero	% /10°C	0.040	0.030	0.016
Temperature effect on sensitivity	% /10°C	0.040	0.030	0.016
Compensated temperature range	°C	-10 to 50		
Operating temperature range	°C	-50 to 70 (100*)		
Deflection at E _{max}	mm	max 0.10		
Measuring rate	Hz	200		
Supply	Vdc	24Vdc ±10%		
Internal resolution	Bit	24		
Material		Stainless Steel 17-4PH and AISI316		
Protection		IP68		
Cable		6meter standard coaxial RG-58 (Ø6mm) with BNC connector		
Maximum cable length	m	100		
Weight	kg	1.1		
Output options		PROFINET, Profibus DP, EtherNet/IP, DeviceNet, Modbus ASCII/RTU RS485/422, 4-20mA, 0-10Vdc, EtherCAT (pending)		
* with Teflon cable				
** higher accuracies available on request				

- [Digital Beam Load Cell Type SDC Datasheet PDF](#)

Dimensions (mm)



Options

- Load cell cable length 10, 20, 50 or 100meters
- Special PE load cell cable available for freezing low temperature (can be used down to -50 degrees Celsius)
- Special Teflon load cell cable available for very high temperature (can be used up to 100 degrees Celsius)

Documentation

- [Digital Beam Load Cell Type SDC Dimensions PDF](#)
- [Digital Beam Load Cell Type SDC STEP \(right click -> "Save Link As..."\)](#)
- [Guideline Correct Mounting of BNC Connector \(UK\) PDF](#)

Disclaimer and Legal Information: The information on this web site is provided in connection with products supplied by Eilersen Electric A/S and affiliated companies ("Eilersen"). No license, expressed or implied, to any intellectual property rights is granted by this information or any documents on the web site. Eilersen assumes no liability and disclaims any expressed or implied warranty, relating to sale and/or use of Eilersen products including liability or warranties relating to fitness for a particular purpose. The information on this web site is provided as a service and for information purpose only and is subject to change without prior notice. Eilersen assumes no responsibility or liability whatsoever for any errors or inaccuracies that may appear on this web site. Eilersen is not responsible for any loss of hardware, software or files, caused by the use of the web site or elements downloaded or used from/on the web site. Hence Eilersen makes no warranty, that the web site or product or services provided on the web site (including free software downloads) will meet your requirements or will be uninterrupted, timely, secure or without errors, or that the web site or the servers used by Eilersen are free of viruses or bugs or are fully functional or accurate.